

ARGONAUT CYCLES

Paint Guide



2 0 2 1



PAINT PROCESS

We like to think of paint as a 4 step process. We work on paint designs with customers as deposit is are placed so you have a little bit of time to decide on what you would want to see on your bike. Drop a note in the Paint Design board in BASECAMP as you decide on designs and we will be with you soon to help bring your ideas to life.

1: Select your Paint Design

Design options are found on the following pages - you must **SELECT ONE**:

RAW CARBON - This is exactly how it sounds. Clear finish that highlights the Carbon Fiber your frame is made from.

FULL COLOR - If you want some color this is the option for you.

FADE TO RAW - The best of both worlds have came together to make a design as unique as your layup.

2: Choose your Colors

Select from the 16 curated colors that we offer - Found on page 3

You have to choose:

- Main color
- Logo color
- Headtube and Seat tube logo colors
- Accent Color

3: Decide on your Logo Style

We have 2 different styles of logos to choose from - Found on page 10

4: Start the Conversation

Email your Ideas to Chris our Art Director VIA BASECAMP. We will help finalize your decisions and create some mock ups for you to look at. We recently added a cap the number of mock ups to 5 revisions. Each revision after is an additional \$50.00



RAW CARBON

This is a look that is Unique to Argonaut. Our HPSM technology allows us to create flawless parts inside and out, why not highlight it. Raw Carbon is a paint style that not only highlights your Tailored Layup it also is the lightest weight paint design we can produce.

Choose from our 16 curated colors for your: Logo and Accent colors. Decide on a Logo style: Bold or Thin. Select your finish: Matte or Gloss.



Raw Carbon | Gloss Finish | Pewter Logos | Teal accents



Raw Carbon | Gloss Finish | Hazelnut logos | Teal accents *Painted Inside of stays and fork \$250.00



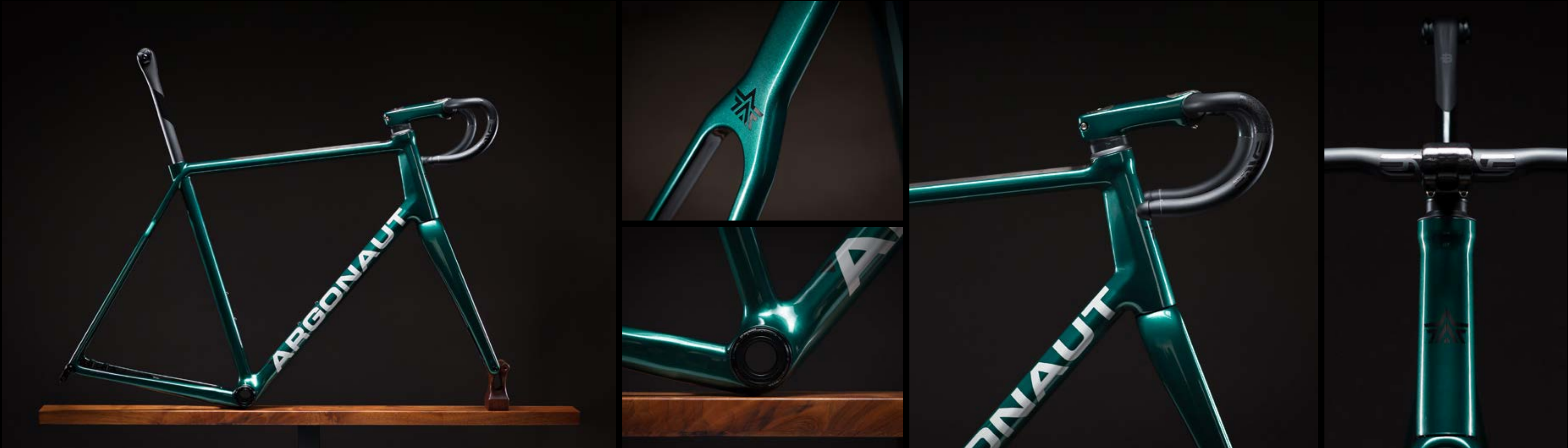
Raw Carbon | Matte Finish | Pewter DT logo | Pearl accents



FULL COLOR

Sometimes Raw Carbon is too dark. If color is more your style this Paint Design for you. Once fully coated in one of our 16 colors - the industrial design of the tube shapes and junctions really start to be defined. If you want to see some of the Carbon that makes your Argonaut so special you can choose Raw Carbon as a color for logos and accents.

Choose from our 16 curated colors for your: Main, Logo, and Accent colors. Decide on a Logo style: Bold or Thin. Select your finish: Matte or Gloss.



Full Color | Gloss Finish | British Racing Green | Pearl Logo | Raw Carbon accents



Full Color | Matte finish | Pewter | Gloss Raw Carbon logos and Accents * Combo of Matte and Gloss is \$200.00



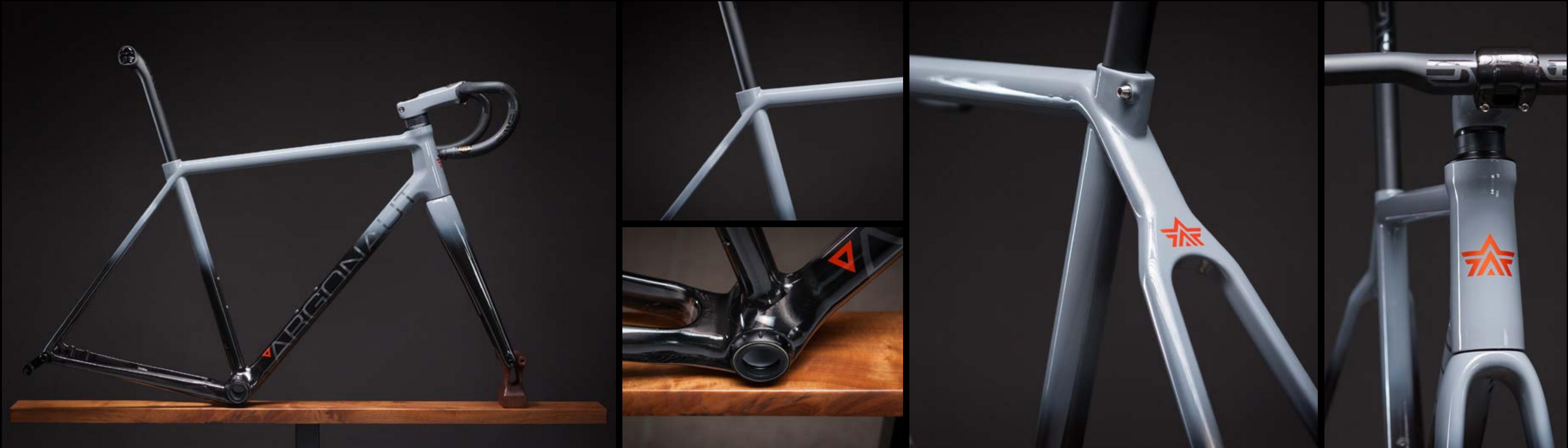
Full Color | Gloss Finish | Cobalt Candy | Silver under Candy Logos | Hazelnut accents *Painted Inside of stays and fork \$250.00



FADE TO RAW

Do you want something more? The FADE TO RAW design is just for you. It has the best of both worlds and it gets attention. We fade the color top down, so the dirtiest parts of your bike remain black (Raw Carbon) as intended.

Choose from our 16 curated colors for your: Main, Logo, and Accent colors. Decide on a Logo style: Bold or Thin. Select your finish: Matte or Gloss.



Fade To Raw | Gloss Finish | Don't call it Nardo | Pewter Logo | Magma Accents



Fade To Raw | Gloss Finish | Ruby Candy | Pewter Logo | Pearl Accents



Fade To Raw | Gloss Finish | Cotton Candy Pink | Argo Teal Logo | Pearl Accents *special order color starting at \$100.00



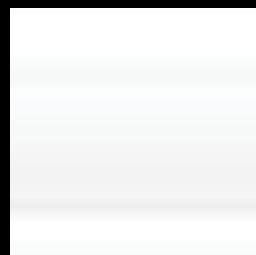
2021 COLORS

Argonaut's mantra when it comes to paint is: Less is More. In 2012 when we launched the original Space Bike you had a choice of Matte or Gloss raw carbon. Since then we have added a few more colors to our options. In order for a color to make the cut we feel like it needs to have the ability to stand the test of time. We want your Argonaut to look as good today as it does 20 years from now. From the colors below there are thousands of combinations.

Metallic Colors



Hazelnut
Gloss or Matte



Pearl
Gloss Only



British Racing Green
Gloss or Matte



Pewter
Gloss or Matte

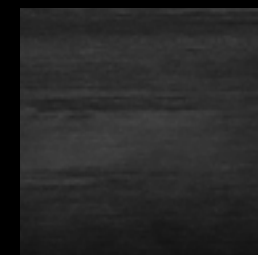


No Apologies Silver
Gloss Only



Magma
Gloss or Matte

Raw

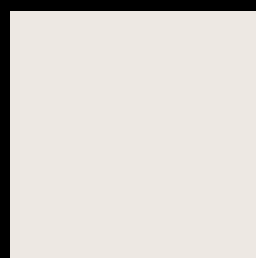


Always and Forever
Raw Carbon
Gloss or Matte

Solid Colors



Moss
Gloss or Matte



Decomposes Granite
Porsche Chalk
Gloss Only



Denim
Gloss or Matte



Argo Teal
Gloss Only



Don't call it Nardo
Gloss or Matte



Caribbean
Gloss Only

Candy Colors



Cobalt
Gloss Only



Emerald
Gloss Only



Ruby
Gloss Only



LOGO OPTIONS

Bold Logo:

Accent Color: _____

 **ARGONAUT**

Thin Logo:

Accent Color: _____

 ARGONAUT



TEMPLATE

Sometimes it's easier to illustrate your ideas. Print this out and use it as a starting point for your Dream Bike if that sounds easier. Once you are done send in a photo and we can start creating mock ups from there.



Paint Design Style:

Colors:

Main Color

Downtube Logo Color

Headtube Logo Color

Seatcluster Logo Color


Accent Color

Frame Finish:


Gloss

Matte

Logo Style:



BOLD LOGO



THIN LOGO

ARGONAUT

PAINT GUIDE - 2021



ARGONAUT

Thank you for being apart of the Argonaut Experience.